



UNIMECH GROUP, MALAYSIA



A MEMBER OF UNIMECH GROUP, MALAYSIA

1000 W.O.G. FULL BORE TWO-PIECE BALL VALVE SCREWED END

ISO 9001 : 2000

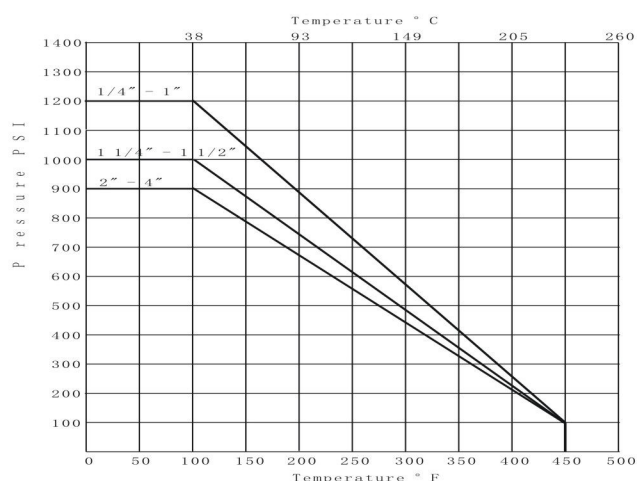
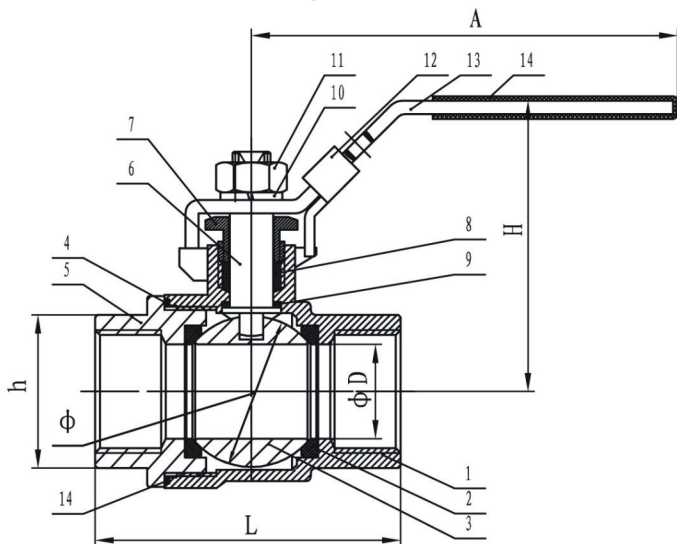


Arita ball valves bodies are of 2 piece design. The stainless steel bodies are investment cast to provide high quality finishing and strength. The full port design minimizes pressure drops across the valve and gives smooth flow characteristics. There are options for ball seat materials, namely PTFE, RPTFE, PPL and PEEK that allow the valves to be employed in environment above 300°C. Other features incorporated are blow out proof stem, adjustable stem packing, low operating torque and lockable handle. This product is suitable for general and industrial applications.

Dimension in mm

SIZES		ØD	L	H	A	h	Ø	WT. (KG)	Cv	TORQUE (Nm)
DN	In.									
6	1/4	12.5	51	48	103	22.0	20.5	0.23	10	1.5
10	3/8	12.5	51	48	103	22.0	20.5	0.22	12	1.5
15	1/2	15.0	63	50	103	26.0	25.5	0.28	38	3.9
20	3/4	20.0	74	57	126	32.0	32.0	0.50	66	5.9
25	1	25.0	86	67	144	40.0	39.0	0.80	105	6.9
32	1 1/4	32.0	98	72	144	48.0	50.0	1.20	190	27.1
40	1 1/2	38.0	106	93	189	56.0	60.0	1.93	275	35.0
50	2	50.0	122	100	189	70.0	76.5	2.96	480	41.0
65	2 1/2	65.0	159	126	223	83.5	100.0	6.00	797	55.0
80	3	76.0	182	136	223	102.0	120.0	9.80	1210	65.0
100	4	94.0	226	167	297	130.0	148.0	17.2	2055	75.0

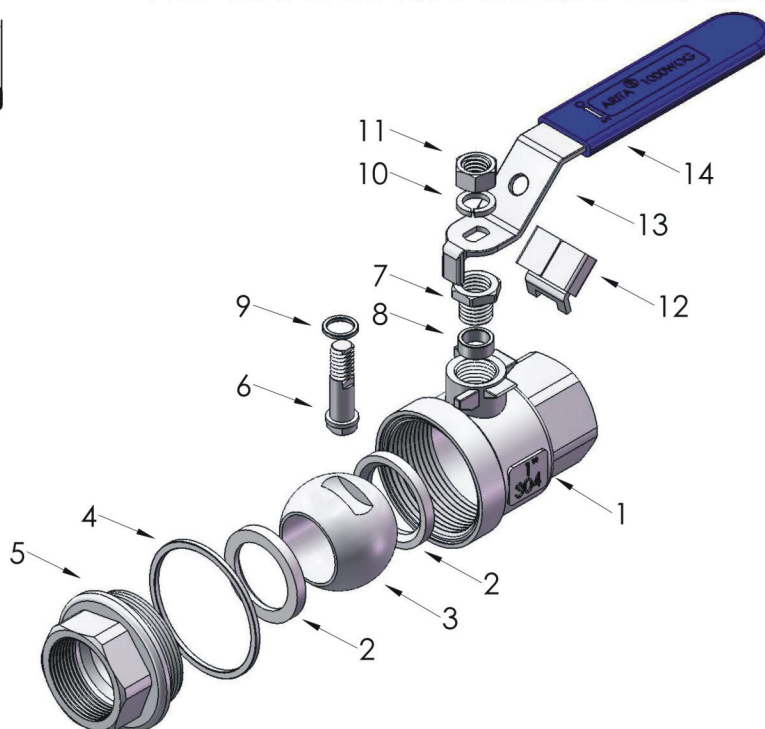
Note : Cv = US Gallon per minutes



Material

No.	PART	QTY.	MATERIAL
1	BODY	1	CF8 / CF8M / WCB
2	SEAT	2	RPTFE / PTFE / PPL / PEEK
3	BALL	1	SUS 304 / 316
4	BODY SEAL	1	RPTFE / PTFE
5	END CAP	1	CF8 / CF8M / WCB
6	STEM	1	SUS 304 / 316
7	PACKING GLAND	1	SUS 304 / 316
8	STEM PACKING	1	RPTFE / PTFE
9	THRUST WASHER	1	SUS 304 / 316
10	SPRING WASHER	1	SUS 304 / 316
11	HANDLE NUT	1	SUS 304 / 316
12	LOCKING DEVICE	1	SUS 304 / 316
13	HANDLE	1	SUS 304 / 316
14	PLASTIC COVER	1	PLASTIC

* PTFE -120°C RPTFE -200°C PPL -300°C PEEK -350°C



Features

- * Pipe thread in accordance : NPT, BSP, BSPT, DIN259, DIN299, ISO 228 CLASS A
- * Screwed end
- * Blow-out proof stem / Full Bore
- * Investment casting body
- * 1000psi (69 Bar) W.O.G. / PN63
- * Locking device
- * Wall thickness ASME B16.34
- * Material : S45C / ASTM A216Gr-WCB / DIN 1.0619
SS304 / ASTM A351Gr-CF8 / DIN 1.4308
SS316 / ASTM A351Gr-CF8M/ DIN 1.4408



A MEMBER OF UNIMECH GROUP, MALAYSIA

The contents of this literature are for informative purposes only. Arita is not responsible for suitability or compatibility of these Products in relation to system requirement .For specific requirements, consult Arita or its distributors, Arita reserves the right to change or modify product design without prior notice.

©2009 Arita Valve ARV-100SE-2PC 06/09
ARV-300SE-2PC